



ENWORK

# Equilibrium

The perfect balance of form and function, Equilibrium turns any space into a design statement. Its patented, revolutionary design leverages a single base to create the illusion of a floating surface up to 20 feet wide.

[enwork.com](http://enwork.com)

## Details

- Available in seated (29" with 1-1/4" top) or standing (42" with 1-1/4" top) heights
  - Cantilevered supports available centered or offset with a solid or truss aesthetic design
  - Removable covers are provided to conceal power and cable routing vertically and horizontally below the top
  - Supports tops 36" to 72" deep and 84" to 240" wide
  - Installation requires 4" concrete. Base bolts to floor with provided hardware
  - Top material options include laminate, veneer, and designer finishes
  - Optional freestanding baseplate dimensions: 15"D x 55"W x 0.5"H. Center cutout for wire management: 12"x12"
- 

## Base Options

\*60" deep quartz and back-painted glass tops are only available on seated height bases with 26"w x 34"D footprint and centered cantilever supports.

### Seated Height (16"D Base)

for 36"–\*60" deep, 84" x 240" wide tops  
26"W x 16"D footprint

Base Options: Triangle or Inverse V  
Centered or Offset Cantilever Supports



### Seated Height (34"D Base)

for \*60", 66"–72" deep, 84" x 240" wide  
26"W x 34"D footprint

Base Options: Triangle or Inverse V  
Centered Cantilever Supports

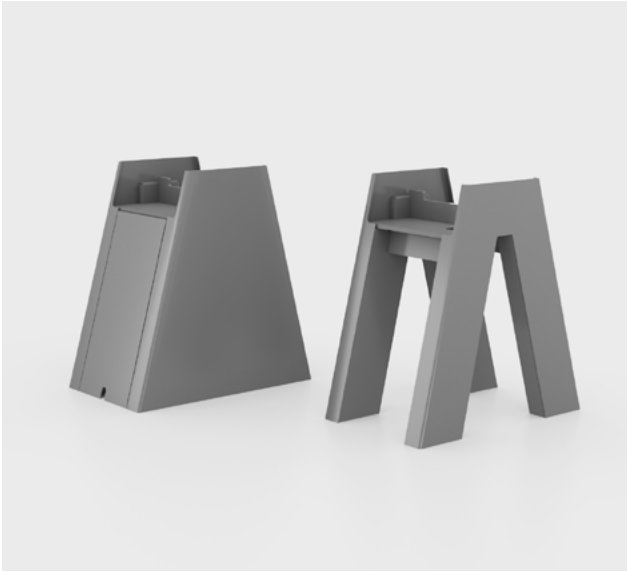


### Standing Height (16"D Base)

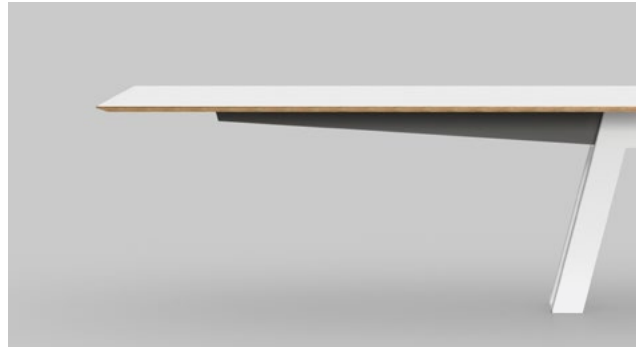
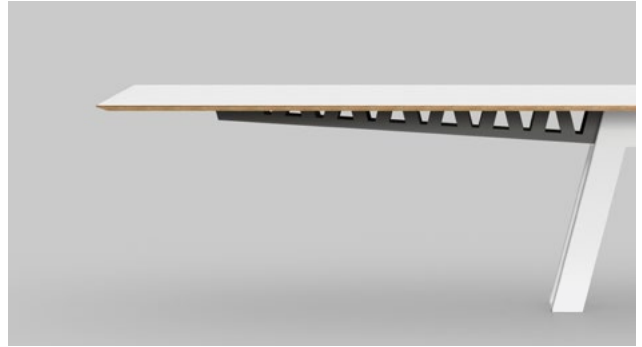
for 36"–\*60" deep, 84" x 240" wide top  
33"W x 16"D footprint

Base Options: Inverse V  
Centered or Offset Cantilever Supports





Triangle and Inverse V Base options



Truss or Solid design cantilever supports



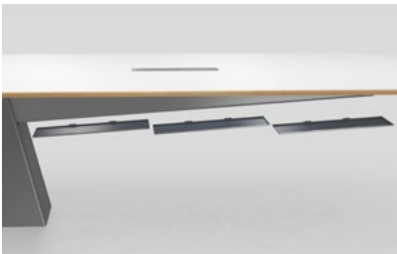
Centered and Offset cantilever supports



Optional baseplate for freestanding applications

---

## Cable Management



Cantilever support removable trough covers  
(Standard on solid cantilever design)



Inverse V base removable cable management covers



Triangle base removable cable management covers

## Equilibrium Round Details

- Available in seated (29" with 1-1/4" top) or standing (42" with 1-1/4" top) heights
- Bases up to 54" diameter have 5.875"D x 13.5"W x 3.5"H power data clearance and bases 60"-84" diameter have 9.875"D x 22"W x 3.75"H power data clearance
- Removable covers are provided to conceal power and cable routing vertically and horizontally below the top
- Installation requires 4" concrete. Base bolts to floor with provided hardware
- Supports tops 36" to 84" round
- Top material options include laminate, veneer, and designer finishes

---

## Base Options



Seated Height 29"H  
36"-54" diameter, 6" x 3.5" footprint  
60"-84" diameter, 8" x 6" footprint



Standing Height 42"H  
36"-54" diameter, 6" x 3.5" footprint  
60"-84" diameter, 8" x 6" footprint

---

## Dimensions

96"-144"W

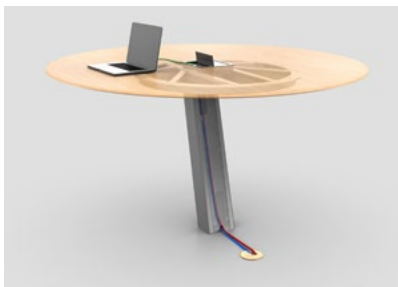


6" x 3.5" footprint

96"-144"W



8" x 6" footprint



Wire management with removable cover to conceal cables.



[enwork.com](https://enwork.com)

1.800.815.7251

Specifications are subject to change without prior notice.

Rev 03.2024

ENWORK